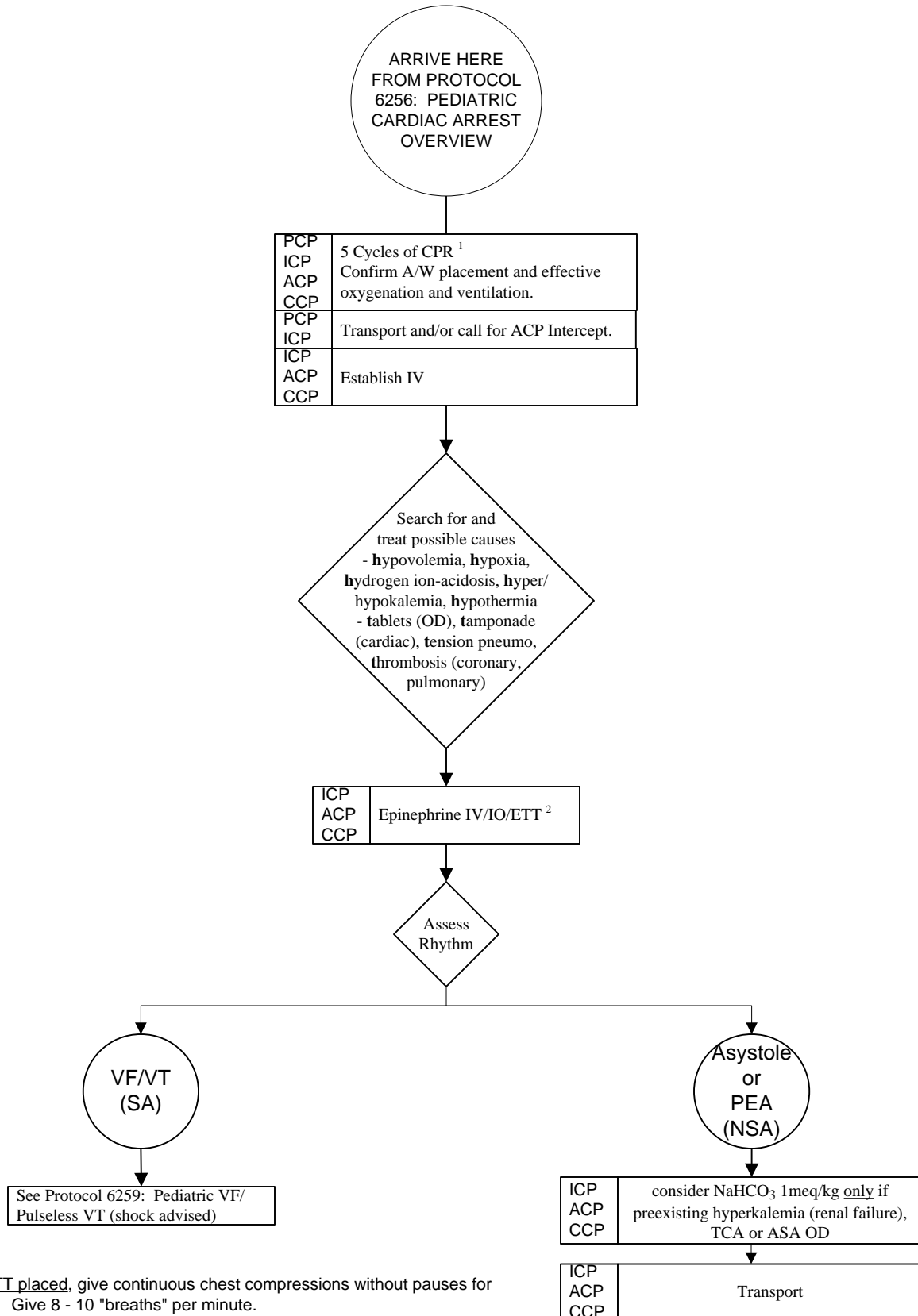


Protocol: Pediatric Asystole (no shock advised)	PDN: 6257.03	Last Updated: February 7, 2006	Subject: Pediatric Cardiac Arrest	Page 1
--	---------------------	---------------------------------------	--	--------



1. Once ETT placed, give continuous chest compressions without pauses for breaths. Give 8 - 10 "breaths" per minute.
2. Epinephrine **IV/IO**: .01mg/kg (.1cc/kg of 1:10,000) q 3-5 mins **ETT**: .1mg/kg (.1cc/kg of 1:1,000) up to 1mg IV/IO or 10mg ETT q 3-5 minutes.